

Feasibility of UWB Radio: Impulse Radio Versus Chaos-Based Approach

Géza Kolumbán

Pázmány Péter Catholic University
Budapest, Hungary
Email: kolumban@itk.ppke.hu

Tamás Krébesz

Budapest Univ. of Technology and
Economics, Budapest, Hungary
Email: krebesz@mit.bme.hu

Francis C. M. Lau

The Hong Kong Polytechnic University
Kowloon, Hong Kong SAR
Email: encmlau@polyu.edu.hk

Abstract—Both the peak power and the average power of emission are limited in UWB systems in order to keep the interference caused in an already existing narrowband radio system low enough. It is frequently overlooked that these power limits have to be checked not over the transmitted UWB signal but at the output of a bandpass filter specified in the FCC regulations. A further constraint exists in the handheld cheap devices where the low supply voltage reduces even further the attainable energy available to carry one bit information. The bit energy determines the coverage, the larger the bit energy, the larger the coverage.

Introducing a novel approach an exact link budget calculation is proposed here for UWB impulse radio. Since the NLOS coverage of impulse radio obtained from the link budget is less than 2 m, the implementation of WLAN systems is not feasible with UWB impulse radio devices. To increase the bit energy, the UWB carrier-based approach, where the duty cycle is considerably increased, is proposed here. More than 16-dB improvement in bit energy has been achieved by increasing the UWB carrier duration to 300 ns.

I. INTRODUCTION

The Ultra-WideBand (UWB) technology allows to reuse the already occupied frequency bands by spreading the transmitted modulated UWB signal over an ultra-wide frequency band. Since both the *peak* and *average* powers of transmitted UWB signals are limited, the UWB signals do not cause a noticeable interference in the existing radio systems. The Federal Communications Commission (FCC, USA) [1] made the application of UWB technology possible in 2002 by permitting unlicensed operation of UWB devices.

Two solutions are competing, the

- *UWB impulse radio* approach where extremely short pulses are used as UWB carriers and the
- *UWB carrier-based* approach where inherently ultra-wideband signals are used as UWB carriers and the duration of transmitted UWB wavelet may be even as long as the bit or symbol duration.

The former and later solutions are referred to as *UWB impulse radio* and *UWB carrier-based radio* here. Note, the two methods differ in the way of generating an UWB carrier with a low spectral density.

First of all a basic question should be answered: Which solution offers the best system parameters and the largest coverage in UWB radio communications? Unfortunately, this question has not yet been answered and this is why the UWB story, the implementation of a great idea, is not a success story.

Task Group 4a (TG4a) of the IEEE 802.15 Working Group, established by the IEEE 802 LAN/MAN Standards Committee, elaborated and approved a standard [2] for the Low-Rate (LR) applications. The LR transceivers are expected to operate for years using the same battery. The physical (PHY) layer defined in TG4a focuses on the UWB impulse radio approach but, as alternative solutions, the use of chirp spread spectrum technology and chaotic carriers are, at least theoretically, allowed.

LR UWB Impulse Radio (IR) transceivers have been designed and built at MIT, USA [3], [4] and in the framework of two large European projects called PULSERS [5] and EUWB [6]. The results of field tests have shown that the sensitivity of the built receivers is too low, the coverage of implemented UWB IR systems is as short as a

few meters. That short radio range prevents the use of UWB impulse radio technology in the vast majority of foreseen applications. To increase the coverage, the bit energy has to be increased.

The use of the UWB carrier-based approach is proposed here to increase the bit energy. The ultra-wide bandwidth is assured by a chaotic signal. To get a constant envelope carrier, the chaotic signal is fed into an FM modulator. The proposed technique allows to increase the bit energy up to 20 dB that extends the coverage considerably.

II. PREVENTING INTERFERENCE IN CONVENTIONAL SYSTEMS

To maximize the sensitivity, the conventional radio systems use narrowband receivers that can be modeled by a cascade connection of a bandpass channel filter and a demodulator.

A. Classes of UWB Carriers

According to the two classes of UWB carriers, two kinds of interferences have to be distinguished:

- UWB impulse radio with an extremely low duty cycle. In this case the average level of corruption is negligible but the huge peaks interrupt the operation of synchronized subsystems, such as carrier and clock recovery circuits, at the victim receiver.
- UWB carrier-based radio where the peak power cannot interrupt the operation of synchronized subsystems. The UWB signal is a wideband signal with an almost uniform psd that is added to the noise level at the demodulator input of victim receiver.

The FCC Regulations say nothing about the type of UWB carrier, they give only the rules under which the UWB frequency band may be accessed. The UWB impulse radio approach forms only a subclass in UWB radio communications where the well-known property of Fourier transform, namely, that an extremely short pulse occupies an ultra-wide bandwidth in the frequency domain, is exploited.

B. FCC Power Limits

The FCC Regulations consider both kinds of interference. They limit the radiated UWB power in two ways, both the peak and average powers are limited:

- 1) “There is a limit on the *peak* level of the emissions contained within a 50-MHz bandwidth centered on the frequency at which the highest radiated emission occurs . . . That limit is 0 dBm EIRP.”
- 2) The *average* “radiated emissions . . . shall not exceed” -41.3 dBm EIRP “when measured using a resolution bandwidth of 1 MHz” over the frequency band of 3.1 GHz to 10.6 GHz. “The RMS average measurement is based on the use of a spectrum analyzer with a resolution bandwidth of 1 MHz, an RMS detector, and a 1 ms or less averaging time.”

Note, the FCC Regulations gives not only the limits but also instructions how the power limits have to be measured. The FCC Regulations have been derived from the model of a narrowband receiver. Observe, neither the FCC *peak* nor the *average* power limits

are directly applied to the modulated UWB signals, instead, they give limits on the outputs of the two specified FCC bandpass filters.

III. CARRIER USED BY UWB IR DEVICES

Both narrowband and wideband UWB IR devices have been defined in the IEEE Standard 802.15.4a-2007 [2], the bandwidth of the former and later devices are about 499.2 MHz and 1.3312 GHz, respectively. The UWB IR carrier is a bandpass signal that can be decomposed into a lowpass envelope and a sinusoidal carrier. The standard does not specify the exact shape of envelope.

Because of its implementability with CMOS [4] and easy mathematical handling, the frequency-shifted gaussian pulse is considered here as a UWB IR carrier

$$g(t) = p(t) \cos(\omega_C t) = V_{peak} \exp\left(-\frac{t^2}{2u_B^2}\right) \cos(\omega_C t) \quad (1)$$

where $p(t)$ is the lowpass gaussian envelope, $f_C = \omega_C/2\pi$ is the center frequency of UWB carrier and V_{peak} denotes the pulse peak amplitude

$$V_{peak} = \sqrt{\frac{2Z_0 E_b}{\sqrt{\pi} u_B}} \quad (2)$$

In (2), Z_0 denotes the characteristic impedance over which the energy per bit E_b is measured and u_B is determined by the 10-dB RF bandwidth $2f_B$ of UWB IR carrier

$$u_B = \frac{1}{2\pi f_B \sqrt{\log_{10}(e)}} \quad (3)$$

Due to the gaussian envelope, the UWB carrier decreases rapidly as a function of time. The effective pulse width, introduced in spectrum analysis [7], is used to define the UWB pulse duration

$$\tau_{eff} = \int_{-\infty}^{+\infty} \frac{p(t)}{V_{peak}} dt = \sqrt{2\pi} u_B = \frac{1}{f_B \sqrt{2\pi \log_{10}(e)}} \quad (4)$$

Since only the narrowband UWB IR devices are feasible today, only the narrowband approach is considered here where $\tau_{eff} = 2.43$ ns.

IV. ATTAINABLE COVERAGE OF UWB IR DEVICES

The coverage of a radio device depends on the energy per bit. The higher the E_b , the larger the coverage.

A. Limits on Energy per Bit

E_b is limited by three issues: (i) FCC peak and (ii) FCC average power limits, and the (iii) low supply voltage of handheld devices.

1) *FCC Peak Power Limit:* The peak emission is defined at the output of a bandpass filter having a bandwidth of $\text{RBW}_{50}^{\text{FCC}} = 50$ MHz. Let this bandpass filter be referred to as the FCC filter. According to the FCC peak power limit, the FCC filter output shall not exceed 1 mW.

To express the relationship between the envelope $p(t)$ of the UWB IR carrier and the FCC peak power limit, a lowpass equivalent model for the interpretation of FCC peak power limit has been developed. In the equivalent model, depicted in Fig. 1, the lowpass equivalent of the FCC filter is driven by the envelope of UWB IR carrier. The cutoff frequency of lowpass equivalent filter is equal to the half of the FCC filter bandwidth, that is, $\text{RBW}_{50}^{\text{FCC}}/2 = 25$ MHz.

The excitation $p(t)$, applied to the input of lowpass equivalent model, is a gaussian nascent function that implements a delta function provided that $\sqrt{2}u_B \rightarrow 0$. From an engineering point of view this condition is always satisfied since $f_B \gg \text{RBW}_{50}^{\text{FCC}}/2$. Then, considering a 50- Ω termination, the relationship between the FCC

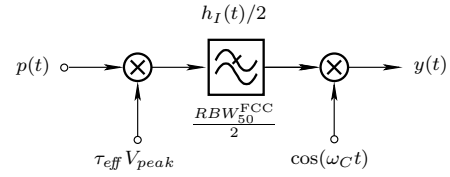


Figure 1. Lowpass equivalent model of the FCC peak power limit calculation.

1-mW peak power limit and the UWB IR energy per bit is obtained as

$$P_{peak}^{\text{FCC}} = 0 \text{ dBm} \equiv \frac{y(0)^2}{Z_0} = \frac{2E_b}{\sqrt{\pi} u_B} (\text{RBW}_{50}^{\text{FCC}} \tau_{eff})^2 \quad (5)$$

2) *FCC Average Power Limit:* The average power level of UWB emission has to be measured by a spectrum analyzer with a resolution bandwidth of 1 MHz, an RMS detector, and a video filter that has 1 ms or less averaging time. The lowpass equivalent model of the FCC average power limit measurement is depicted in Fig. 2 where $\text{RBW}_1^{\text{FCC}}/2 = 500$ kHz.

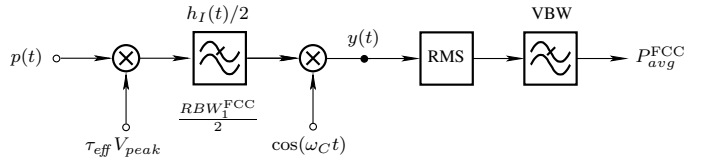


Figure 2. Lowpass equivalent model of FCC average power limit calculation.

According to the FCC Regulations the average power P_{avg}^{FCC} may not exceed -41.3 dBm EIRP

$$P_{avg}^{\text{FCC}} = -41.3 \text{ dBm} \equiv \frac{E_b}{\sqrt{\pi} u_B} 1.06 \text{ RBW}_1^{\text{FCC}} \frac{\tau_{eff}^2}{T_{bin}} \quad (6)$$

where T_{bin} is the bit duration and constant of 1.06 appears since not ideal but gaussian filters are used in the built spectrum analyzers [7].

3) *Supply Voltage Limit on Pulse Peak Amplitude:* The supply voltage of low-power, handheld SoC UWB transceivers is less than 1.5 V. In the low-cost applications, considered here, an LC-transformer cannot be used to increase the signal amplitude. Consequently, the low supply voltage limits the maximum attainable peak-to-peak voltage swing at the transmitter output in 1 V. The supply voltage limit on E_b is obtained from (2) as

$$E_b = \frac{\sqrt{\pi} u_B}{2Z_0} V_{peak}^2 = \frac{\sqrt{\pi} u_B}{8Z_0} \quad (7)$$

B. Link Budget Calculation

In conventional telecommunications systems, where the carrier waveform fills up the entire bit duration, the link budget calculation relies on the *signal-to-noise* or on the *carrier-to-noise* ratios. This approach cannot be used in the UWB IR systems where the duty cycle is extremely low and the peak-to-average power ratio is extremely high. Instead, the link budget calculation must rely entirely on E_b .

1) *Attainable Excess Link Margin:* Let $(E_b/N_0)^{[Tx]}$ and $(E_b/N_0)^{[DEM]}$ denote the UWB signal energy per bit-to-noise power spectral density ratio available at the transmitter and required by the demodulator, respectively. The attainable excess link margin is

$$\text{ELM}_{attain} = (E_b/N_0)^{[Tx]} - (E_b/N_0)^{[DEM]} \quad (8)$$

Since $N_0 = -174$ dBm/1 Hz, the first term in (8) is determined by the maximum attainable E_b . As shown in Sec. IV-A, E_b is limited by the FCC Regulations and the supply voltage.

The effects of the three limits on E_b have been calculated from (5), (6) and (7) and are plotted in Fig. 3 where $(E_b/N_0)^{[Tx]}$ is plotted against the data rate. The solid and dashed curves give the limits imposed by the FCC Regulations and the supply voltage, respectively. Two important conclusions may be drawn: (i) the low-rate UWB IR devices are *peak power limited* while the high-rate systems are *average power limited* and (ii) the low supply voltage of handheld UWB IR devices prevents even the exploitation of FCC peak power limit, a further loss in maximum attainable E_b occurs.

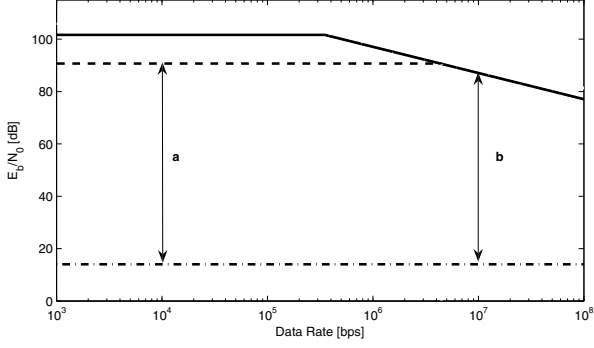


Figure 3. Determination of excess link margin. Solid and dashed curves show $(E_b/N_0)^{[Tx]}$ limited by the FCC Regulations and 1.5-V supply voltage, respectively. Dashed-dotted curve shows the typical value of E_b/N_0 required by a noncoherent UWB demodulator at $BER = 10^{-3}$.

The noncoherent UWB IR demodulators, the only feasible implementation for the low-cost CMOS receivers, requires $(E_b/N_0)^{[DEM]} \approx 14$ dB to assure a BER of 10^{-3} . This value is plotted by dash-dotted curve in Fig. 3.

Figure 3 gives the excess link margin graphically for a specified data rate as the distance measured between the curves of $(E_b/N_0)^{[Tx]}$ and $(E_b/N_0)^{[DEM]}$. As examples, consider two narrowband UWB IR systems with the data rates of 10 kbps and 10 Mbps. As shown by arrow “a” $ELM_{attain} = 76.3$ dB in the former case and the coverage is limited by the supply voltage. Arrow “b” gives $ELM_{attain} = 73.2$ dB for the high-rate system where the coverage is limited by the FCC average power limit.

2) *UWB IR Device Related Parameters*: The ELM_{attain} has to cover the (i) path loss, (ii) receiver noise contribution and the (iii) effects of transmit and receive antennas

$$a_{CH} + \underbrace{NF_{Rx} + I_{LOSS} - G_{Tx} - \eta_{ant}^{[Tx]}(f) - G_{Rx} - \eta_{ant}^{[Rx]}(f)}_{\text{UWB IR device related parameters}} \quad (9)$$

where a_{CH} is the path loss including multipath, NF_{Rx} and I_{LOSS} denote the overall noise figure and implementation loss, respectively, of the UWB IR receiver. The gain and frequency dependence of transmit and receive antennas are accounted by the G and $\eta_{ant}(f)$ terms. Note, each parameter has to be substituted in decibels in (9).

The parameters of built UWB impulse radio receivers have been reported recently in [3] and [4]. Only low- or zero-gain antennas can be used in the handheld applications. Let the frequency dependence of antenna be neglected in our calculation. Then the sum of *UWB IR device related parameters* is about 14 dB.

3) *Path Loss*: The path loss is a random variable, its mean depends on both the distance of transmit and receive antennas and the frequency. The Channel Modeling Subgroup of IEEE 802.15.4a adopted the “power-law” model and decomposed the path loss into

four terms

$$a_{CH} = PL_0 + 10n \log_{10}(d/d_0) + 20(\kappa + 1) \log_{10}(f/f_0) + S \quad (10)$$

where PL_0 is the path loss at the reference distance $d_0 = 1$ m and reference frequency $f_0 = 5$ GHz, n is the path loss exponent, κ describes the frequency dependence of path loss and S is a random variable with zero mean. The distance d and frequency f have to be substituted in meters and GHz, respectively. The channel parameters to be substituted into (10) are given on the IEEE 802.15.4a website for each UWB application environment.

C. Coverage of UWB IR Devices

To get the radio coverage, first the UWB IR device related parameters have to be deduced from the attainable ELM plotted in Fig. 3. Then substituting $S = 0$ into (10), the mean coverage can be calculated.

Consider a typical low-rate application where the data rate is equal or less than 75 kbps. Assuming Non-Line-Of-Sight (NLOS) propagation, (10) gives 2 m and 1.4 m for the mean value of coverage in indoor *residential* and *office* applications, respectively. These attainable link distances are so short that the implementation of WLAN systems with the UWB impulse radio devices is not feasible. To solve the problem, $(E_b/N_0)^{[Tx]}$ *must be increased considerably*.

There are two solutions to the problem: the energy per bit can be increased by using (i) more than one UWB carrier pulse to transmit one bit information or by applying the (ii) *UWB carrier-based* approach. The latter approach is considered here.

V. IMPROVING UWB RADIO COVERAGE USING THE UWB CARRIER-BASED APPROACH

The very short pulse duration and the 1.5-V supply voltage limit are responsible for the low E_b in the UWB impulse radio. In the UWB carrier-based approach an inherently wideband wavelet is used as UWB carrier, consequently, the duration of UWB wavelet can be increased considerably. Recall, the larger the wavelet duration, the larger the E_b and the UWB radio coverage.

A. Generation of UWB Carrier

The block diagram of UWB carrier generation is shown in Fig. 4 where a Bernoulli shift map is used to provide a discrete-time chaotic signal which is converted into an analog waveform by a Zero-order Hold (ZoH) circuit. Then an FM modulator generates an ultra-wideband signal with constant envelope. Finally, a switch is used to form the UWB carrier wavelets with duration of T_{ch} and repetition rate of T_{bin} .

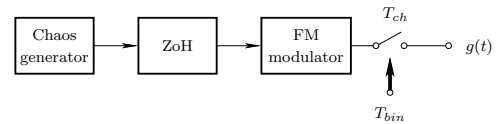


Figure 4. Generation of a constant envelope UWB carrier.

As shown in Fig. 5, a smooth spectrum satisfying the FCC Regulations is obtained with an adequate choice of circuit parameters. The duration of UWB carrier wavelets has been chosen to 300 ns in order to permit the generated chaotic signal to cover the entire state space of Bernoulli shift generator. If so then the spectrum of each UWB carrier wavelet becomes identical.

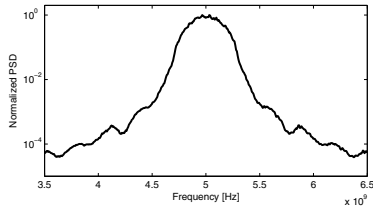


Figure 5. Spectrum of chaos-based UWB carrier where $T_{ch} = 300$ ns.

B. Exploitation of FCC Peak Power Limit

As shown in Fig. 3, the low-rate UWB IR devices are peak power limited. Unfortunately, the handheld devices even cannot exploit the FCC peak power limit because their voltage swing at the transmitter output is limited by the low supply voltage.

The use of UWB carrier based approach increases E_b in two ways: it (i) increases the duration of carrier wavelet (note, $\tau_{eff} = 2.43$ ns $\ll T_{ch} = 300$ ns) and, simultaneously, it (ii) reduces the wavelet amplitude that belongs to the FCC peak power limit. The reduced amplitude remains below the supply voltage limit.

Recall, the FCC peak power limit says nothing about the power or amplitude of the UWB carrier, instead, it limits the peak power at the output of the FCC bandpass filter. The relationship between the parameters of UWB carrier (amplitude, duration, shape) and peak power output of FCC bandpass filter is not straightforward, an analytical expression has not yet been found.

Consider a constant envelope UWB carrier generated by the block diagram of Fig. 4, characterized by the spectrum shown in Fig. 5 and having a duration of 300 ns. Recall, the bandwidth of FCC filter is 50 MHz. The response of the FCC bandpass filter to the chaos-based UWB carrier wavelet is shown in Fig 6. Both the transient and steady-state responses can be observed in the FCC filter output that carries an AM in spite of the fact that the input is a constant envelope signal. The amplitude of UWB carrier remains below 0.24 V, consequently, the low supply voltage of the handheld UWB device does not limit E_b anymore. Note, the UWB carrier-based approach allows to increase the wavelet duration considerably and also permits to fully exploit the FCC peak power limit in handheld applications.

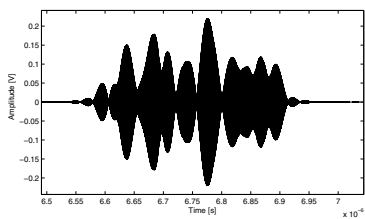


Figure 6. Response of the FCC bandpass filter to the constant envelope UWB carrier wavelet. The duration of UWB carrier wavelets is 300 ns.

C. Enhancement in Attainable Energy per Bit

To show the effectiveness of the technique proposed here the attainable energy per bits of two narrowband handheld UWB systems offering a data rate of 75 kbps have been compared. In the reference solution the UWB impulse radio approach is used where the 1.5-V supply voltage limits the attainable E_b . Due to the low E_b , the UWB IR devices offer only an unacceptable short radio coverage.

In the UWB carrier-based approach proposed here a chaotic signal assures the ultra-wide carrier bandwidth. The solution keeps the amplitude of the UWB carrier low enough, consequently, E_b is limited only by the FCC peak power limit. The relative enhancement

in E_b is plotted in Fig. 7 as a function of the UWB carrier wavelet duration. A considerable enhancement can be achieved, for example, the improvements in E_b are 16.2 dB and 20 dB when the durations of UWB carrier wavelet are 300 ns and 800 ns, respectively. According to (10), this large improvement significantly increases the coverage of UWB radio devices.

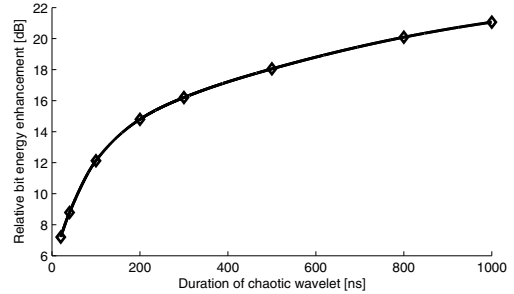


Figure 7. Improvement in attainable energy per bit when constant envelope UWB wavelets generated from a chaotic signal are used as carrier.

VI. CONCLUSION

The coverage of UWB impulse radio devices is limited by the FCC Regulations because they restrict the attainable energy per bit. The low supply voltage of handheld UWB IR devices limits even further the attainable E_b . Deriving a novel approach for the link budget calculation this paper has shown that the maximum coverage of UWB IR devices becomes less than 2 m in indoor applications under NLOS propagation conditions. That short coverage prevents the application of the UWB impulse radio approach in WLAN applications.

Since the extremely short pulse duration is responsible for the low E_b in UWB impulse radio, the use of FM modulated chaotic waveforms with relatively long duration is proposed here as a UWB carrier. A 16-dB and 20-dB improvements in E_b have been achieved with the UWB carrier durations of 300 ns and 800 ns, respectively. That huge increase in energy per bit considerably improves the coverage of UWB radio devices.

ACKNOWLEDGMENT

This work has been financed by the Hungarian-French Intergovernmental S&T Cooperation Programme under the contract number FR-09/2008. T. Krebesz's ISCAS participation has been financed by the Mecénatura Fund, National Office for Research and Technology (NKTH), Hungary.

REFERENCES

- [1] Federal Communications Commission, *Part 15 of the Commission Rules Regarding Ultra-Wideband Transmission Systems; Subpart F*, FCC–USA, Online: <<http://sujan.hallikainen.org/FCC/FccRules/2009/15/>>.
- [2] *IEEE Standard 802.15.4a-2007*, IEEE Computer Society, LAN/MAN Standards Committee, Work Group 15, Task Group 4a, 2007.
- [3] F. S. Lee and A. P. Chandrakasan, "A 2.5 nJ/bit 0.65 V pulsed UWB receiver in 90 nm CMOS," *IEEE J. Solid-State Circuits*, vol. 41, no. 12, pp. 2851–2859, December 2007.
- [4] P. P. Mercier, D. C. Daly, M. Bhardwaj, D. D. Wentzloff, F. S. Lee, and A. P. Chandrakasan, "Ultra-low-power UWB for sensor network applications," in *ISCAS'08*, Seattle, Washington, USA, May 18–21 2008, pp. 2562–2565.
- [5] *Pervasive Ultrawideband Low Spectral Energy Radio Systems (PULSERS)*, IST Programme (FP6) of the 6th EU Framework Programme, Online: <<http://www.pulsers.eu/pulsers/index.php?home>>, 2005.
- [6] *Coexisting Short Range Radio by Advanced Ultra-Wideband Radio Technology (EUWB)*, IST Programme (FP7) of the 7th EU Framework Programme, Online: <<http://www.euwb.eu/>>, 2008–2011.
- [7] *Spectrum Analysis ··· Pulsed RF*, Agilent Technologies, Palo Alto, CA, May 2005.